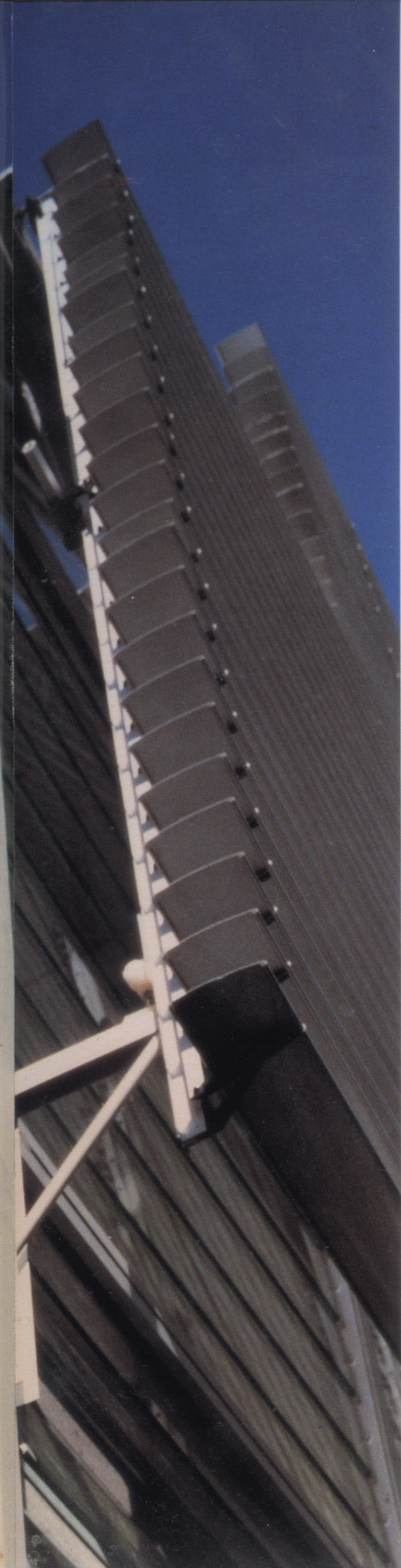


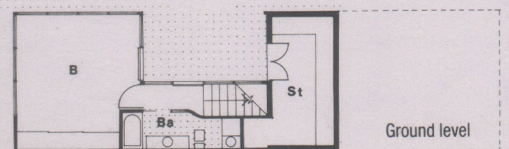
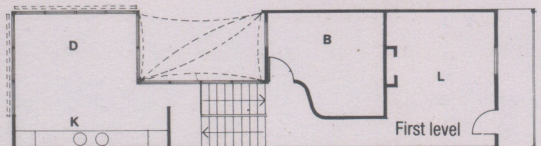
BIRCHGROVE

Ed Lippmann
Lippmann Associates
570 Crown Street
Surry Hills NSW 2010
Ph: (02) 318 0844



Lippman Associates have given this 1890s timber cottage its own strong contemporary character, as well as precious space and light. 'The extension at the rear of the house is hi-tech, in contrast to the existing cottage,' the owners say. 'We like the way the design incorporates industrial materials like glass and metal in advanced construction techniques. It's very pleasant having walls of glass to capture the sunshine.'

'The house is located on a sloping site with harbour views, the fall enabling a split level building with upstairs kitchen and dining. We enjoy the interesting details, such as our central landscaped courtyard which is covered by a retractable canvas hood, and the aluminium sun louvres which give shade, privacy and ventilation. Our extension is totally practical as well as elegant.'



Ed Lippmann